



MURRELLS INLET
SOUTH CAROLINA'S LOW COUNTRY

**Georgetown County
Stormwater Ordinance
Community Review & Input**

March 9, 2006






Topics


- Watershed Basics
 - Karen Fuss, CWSEC
- NPDES Phase II Stormwater Program
 - Susan Libes, Waccamaw Watershed Academy
- Georgetown's Stormwater Ordinance
 - Jeff Pollock, North Inlet-Winyah Bay National Estuarine Research Reserve
- Q&A

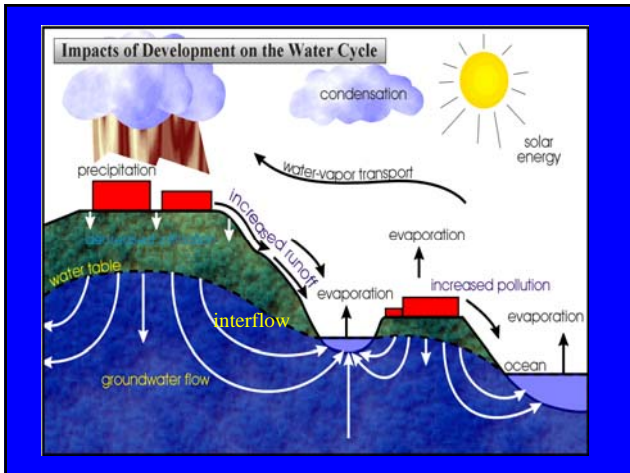
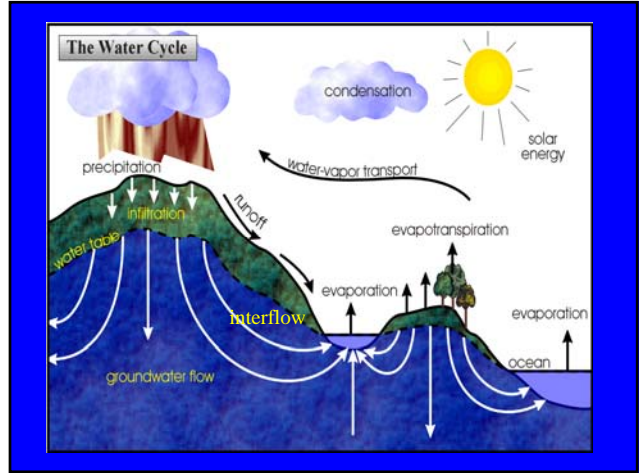
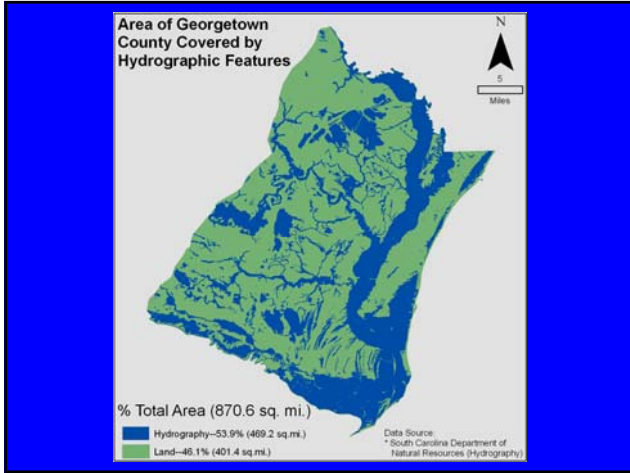
What is a Watershed?



A Watershed is an area of land that drains to a single outlet.

Watersheds in Georgetown County





Point Source Pollution

Nonpoint Source Pollution

Categories of Polluted Runoff

- Pathogens
- Sediment
- Nutrients
- Toxics
- Debris
- Thermal Stress



Impervious Surfaces



Materials like cement, asphalt, roofing, and compacted soil that prevent percolation of runoff into the ground.

Components of Impervious Cover in the Urban Landscape



