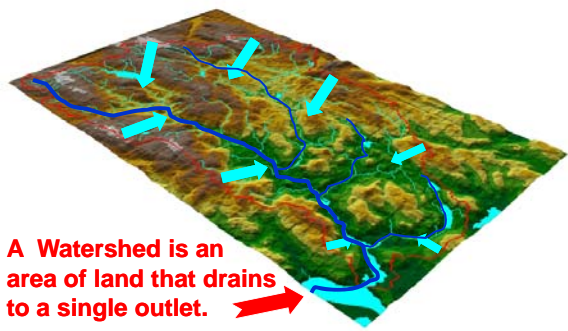


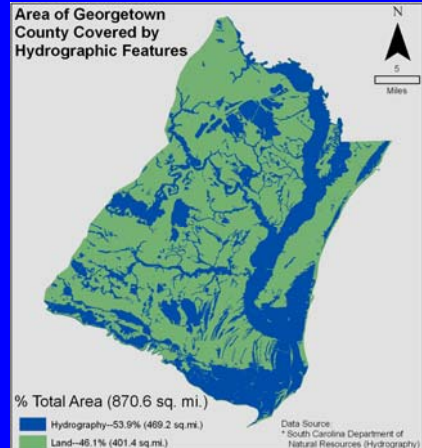
What is a Watershed?

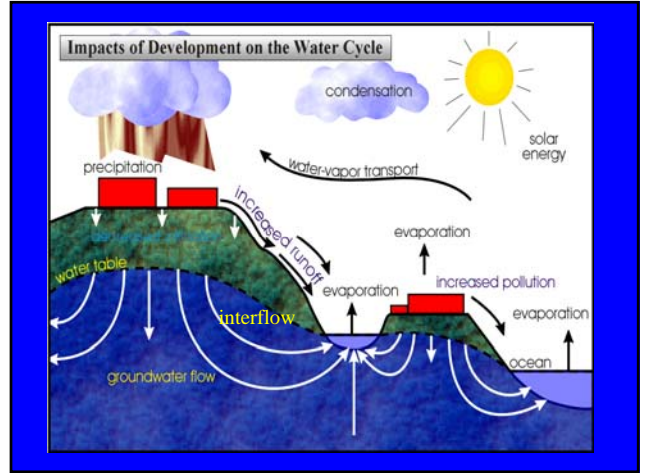
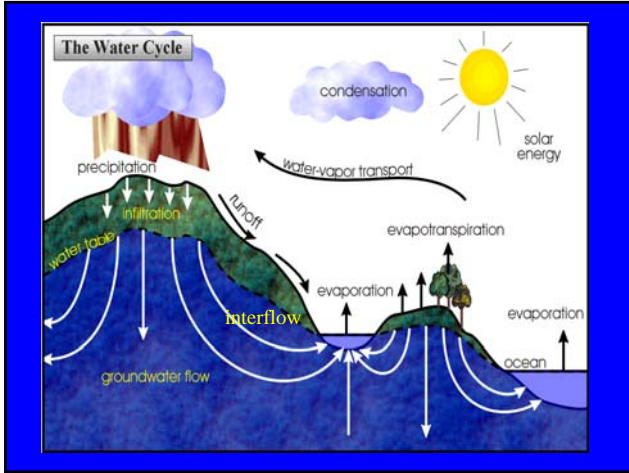


Watersheds in Georgetown County



A Closer Look





Categories of Polluted Runoff

- Pathogens
- Sediment
- Nutrients
- Toxics
- Debris
- Thermal Stress

Impervious Surfaces



Materials like cement, asphalt, roofing, and compacted soil that prevent percolation of runoff into the ground.

Components of Impervious Cover in the Urban Landscape

